

Appendix 2: Assessment Task for Changing Places

The Geography Bulletin 2019 Edition 4 (Volume 51 No 4)



This document has been provided in both PDF and Word formats to allow teachers to add or delete elements as appropriate to their students.

Login to your account to access the GTA Bulletin and individual articles for printing where required.

NOTE: Please read the accompanying article Changing Places: Changing assessment to understand the purpose of this task which is assessing ICT and Critical Thinking things NIT content knowledge.

ASSESSMENT: An Urbanised World

Part 1 – Inquire and respond

Short Answer: Attempt Questions 1 - 4

Answer in the spaces provided in this booklet

Refer to stimulus material where appropriate

You are permitted to use your computer as a research tool in order to investigate specific content in support of your answers.

Allow about 30 minutes for this section

Criteria: Investigating

In your answer you will be assessed on your ability to:

- Formulate and conduct focused research
- Justify the relevance of research within your responses
- Use research methods to collect and record appropriate, varied and relevant information as supporting evidence

Source A – Air quality in Jakarta, A small riverside settlement in Jakarta, peak hour in Jakarta



Source B – Text outlining the causes and consequences of urbanisation in Jakarta

One of the consequences of rapid urbanisation in Indonesia has been the dramatic growth of Jakarta, Indonesia's capital and largest city, located on the north-west coast of Java. Parts of Jakarta, Indonesia's capital city, could be underwater by 2050 due to a devastating combination of sinking land at 17cm/year and sea level rise, with over 50% of the city situated below sea level. Traffic and flooding are treated as common occurrences in Jakarta, yet the impact of congestion and the risks posed by natural disasters are substantial. Congestion alone is costing Metropolitan Jakarta \$3 billion annually. Some 40% of Jakarta is below sea level and faces serious flooding risks. These issues are not going to go away on their own. Indonesia is urbanizing at an extraordinary rate. Today a little bit over half of Indonesia's population live in cities. In less than ten years, by 2025, that ratio will be 68%. Two-thirds of all Indonesians will be city residents. Today, only 48% of urban households have access to safe water. Only 11 suburbs have sewerage coverage. Only 2% of city residents have access to centralised sanitation systems. In order to respond to growing cities, local governments must prioritize developing infrastructure in order to directly address issues.

Refer to Source A, Source B and your own research to answer Question 1 parts (a) and (b)

Question 1

- a) Identify, with evidence, consequences of urbanisation in Jakarta?
.....
- b) Outline ways that Indonesia has reduced the negative impacts of urbanisation in Jakarta since 2000. Justify your reasons with evidence.
.....

Suggested articles for research:

- *Governor Ahok's Policy to Solve Jakarta's Traffic Jams – NewCities*
- *Jakarta at 30 million: my city is choking and sinking – it needs a new Plan B – The Guardian*
- *Air pollution in Jakarta, an invisible health threat – The Jakarta Post*

Question 2

Recently, Indonesian President Joko Widodo decided to relocate the Indonesian Capital from Jakarta to Palangkaraya in Central Kalimantan.

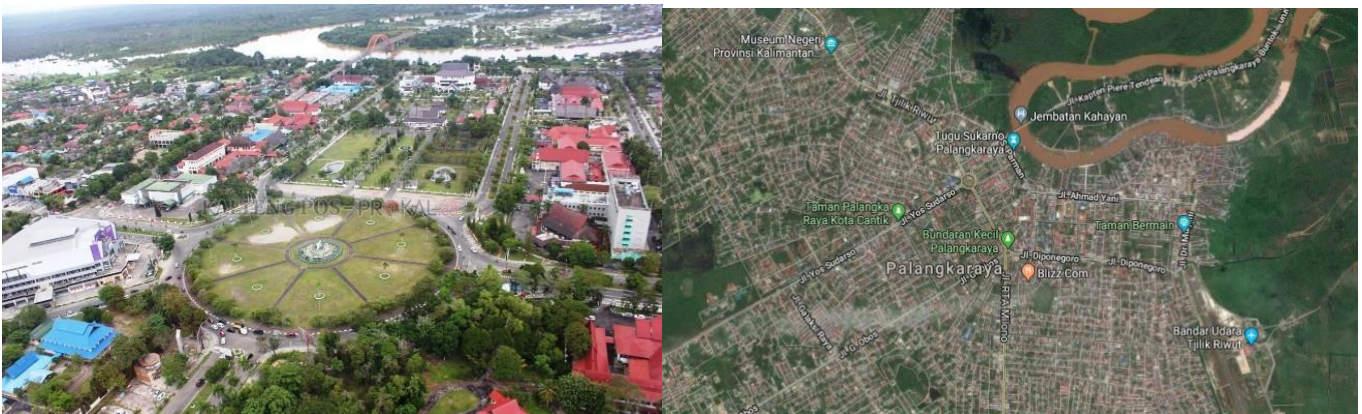
- a. Jakarta is situated on which Indonesian island?
- b. How would you classify Jakarta as an urban settlement?
- c. What evidence can you find to support your answer?

Using your own research, how and why has Jakarta's population changed over the last 50 years and predict how this will change into the future.

Question 3

Recently, Indonesian President Joko Widodo decided to relocate the Indonesian Capital from Jakarta to Palangkaraya in Central Kalimantan.

Source C – Aerial photo and Satellite Image of Palangkaraya in Central Kalimantan



- a. The suggested site, Palangkaraya in Central Kalimantan, is situated on what island?
- b. With reference to Source C and Google Maps/Earth, describe how the land is used in and around Palangkaraya.

Question 4:

- a. Plot the location of Palangkaraya on the map (Source D) below. Mark with an 'X'.

Source D – Map of Indonesia and surrounding countries



b. Using Source D (above), and online research contrast the population pyramid structure of Singapore with Indonesia.

Suggested sources for research:

- *populationpyramid.net*

c. Outline one Social, Economic, and Environmental consequence of the pyramid structure for either Singapore **OR** Indonesia (circle choice)

Social

Economic

Environmental

Part 2 – EXTENDED RESPONSE.

Answer Question 5

Answer in the space provided.

Allow about 20 minutes for this section

Criteria: Critical thinking and communication

In your answer you will be assessed on your ability to:

- Discuss concepts
- Synthesize information to make valid, well-supported arguments
- Analyse sources and data for usefulness
- Interpret different perspectives and implications
- Communicate information and ideas effectively
- Structure information and ideas in an appropriate format

Question 5

At a press conference on Monday, President Joko Widodo will deliver a speech and decide whether to move the capital city to Palangkaraya or keep it in Jakarta.

He needs your help to research and write the speech.

Instructions:

- Using your answers to Questions 1-4, research, and your own knowledge, write a **speech** that addresses the following aspects:
 - What problems have been caused by urbanisation in Jakarta?
 - What are the main reasons for the move to Palangkaraya?
 - If you want to move the capital: explain what solutions will you recommend to make sure the problems in Jakarta are not repeated in Palangkaraya? Support your response with evidence.
 - If you do not want to move the capital: Explain what solutions will you recommend to ensure that the consequences of urbanisation in Jakarta are reduced? Support your response with evidence.

Mr Speaker, fellow Ministers, and staff, last Monday I announced that, due to the devastating consequences of urbanisation in Jakarta, we have to

End of Examination