

RETELL THE NEWS

Stimulus based classroom activity

Lorraine Chaffer, Geography Education Consultant

TASK

This is NOT a research activity. It is a stimulus activity in which you will work in a small group to retell a NEWS STORY from early 2021.... in your own words using only your recall of the event.

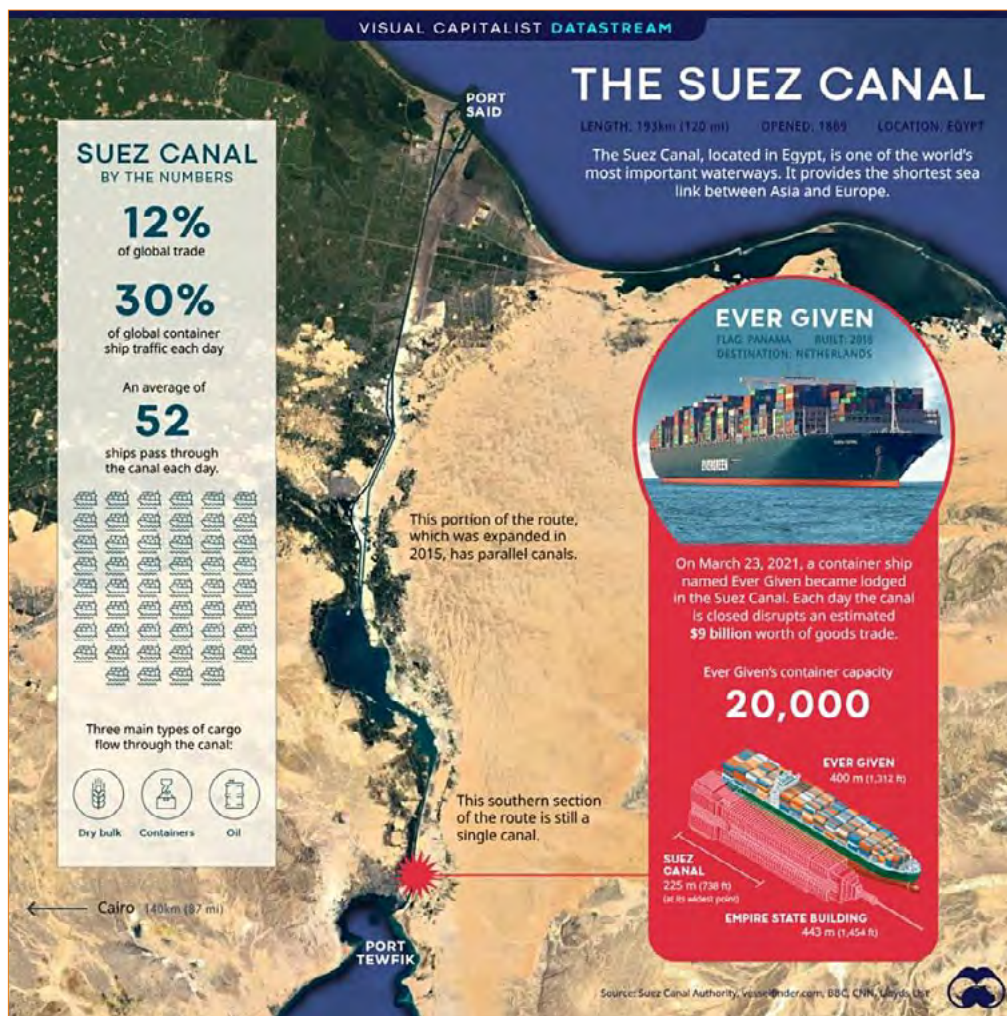
PART A: Group Task

1. Use the following infographic and map to retell the news story of EVERGIVEN. Your news report should contain the following information:

- An appropriate title
- The location
- The incident
- The problem
- The solution
- A link to the Interconnections topic



Map: of Egypt. Image source: Shutterstock



2. As a group, discuss the incident and develop a NEWS REPORT of under 300 words. This can be done using digital collaboration tools or on paper.
3. Each group will share their STORY orally with the class.

From: The Suez Canal: A Critical Waterway Comes to a Halt (Visual Capitalist)

RETELL THE NEWS Stimulus based classroom activity

PART B: Individual Task

After listening to the reports of all class groups YOU will:

- MAKE a digital copy of your group report.
- READ the following media excerpts.
- ADD new details and make your own changes to the group report. (Make it yours)
- FIND a relevant photograph and map to illustrate your story.
- GRAPH the statistics in the table below to insert into your report.
- SUBMIT your illustrated report as a digital file. Credit all sources.

What is the Suez Canal?

Constructed in 1869, the Suez Canal is an Egyptian sea-level waterway that provides a vital shipping route between Europe and Asia. Without this route, ships would need to sail around Africa, adding an entire week to their trips.

The connecting link between two important regional economies, the canal facilitates a significant amount of trade. The Suez Canal Authority (SCA) reported that 19,000 vessels – averaging to 52 a day – had sailed through its waters in 2020.

Year	Number of Vessels	Amount of Cargo (Tons)
2011	17,800	692M
2012	17,224	740M
2013	16,596	754M
2014	17,148	822M
2015	17,483	823M
2016	16,833	819M
2017	17,550	909M
2018	18,174	983M
2019	18,880	1,031M
2020	18,829	1,170M



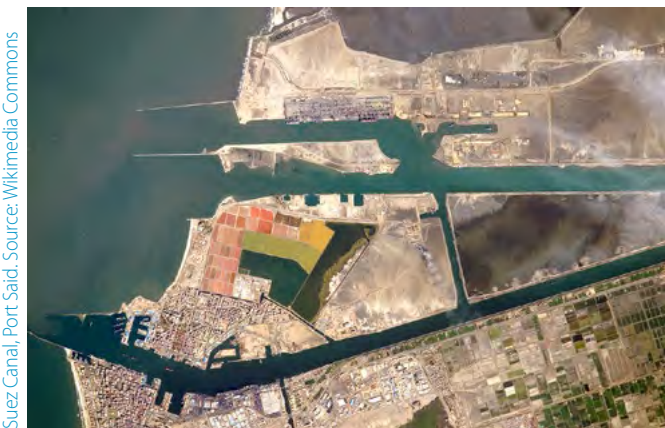
Suez Canal, Egypt. Source: Wikimedia Commons

The total volume of cargo being transported through the canal has increased steadily in recent years. This includes consumer goods, dry-bulk cargo such as grain and minerals, and oil products.

Implications of the Blockage

The blockage of such an important shipping route is bound to have consequences. According to Lloyd's List, each day the Suez Canal is closed disrupts over **\$9 billion** worth of goods trade. European officials have also voiced concern about longer-term impacts, particularly after the blockage is cleared. A sudden influx of ships could cause massive congestion at European ports and further disrupt supply chains.

Source: Visual Capitalist <https://www.visualcapitalist.com/suez-canal-critical-waterway-comes-to-halt/>



Suez Canal, Port Said. Source: Wikimedia Commons



Suez Canal, Egypt. Source: Wikimedia Commons