

GTA NSW & ACT HAS PRINTED A NUMBER OF INFOGRAPHIC POSTERS FOR CLASSROOM USE

Posters are linked to topics studied in Geography K–12 for the Australian Curriculum and NSW Syllabuses.

- A **bank of questions** for individual and groupwork will be accessible via Google Drive to all schools /teachers purchasing posters.
- Posters can be purchased in **pre-packaged sets** or as **individual posters**.
- **New posters** will be added to the website throughout the year.

SOURCES AND PRICING

Posters have been sourced from organisations including the Geological Society (UK), Visual Capitalist and Graphic News. GTA NSW & ACT has also commissioned some posters.

Posters are being sold in sets of 4 or 5 to make postage viable. Affordability was a key consideration when determining pricing.

Administration, printing and distribution, licensing and design costs where relevant are incorporated into the cost of each pack.

Postage includes the cost of cylinders. A maximum of 5 posters will be packaged in any postage cylinder.

ABOUT THE POSTER SIZES

A1 = 594mm x 841mm

A2 = 420mm x 594mm

A3 = 297mm x 420mm

Square = 60cm

PACK 1: THE CARBON CYCLE

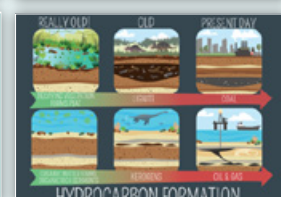
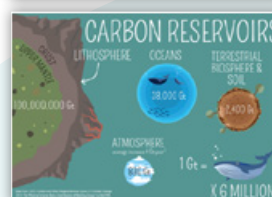
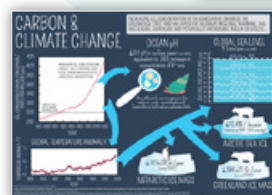
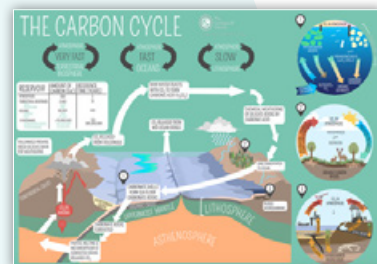
\$70
INCLUDES P/H

1 x A1 poster: **The Carbon Cycle**

4 x A2 posters: **Carbon Set**

- Carbon & the Greenhouse Effect
- Carbon Reservoirs
- Hydrocarbon Formation
- Carbon & Climate Change

CLICK HERE TO
ORDER PACK 1



GEOGRAPHY POSTERS FOR SALE

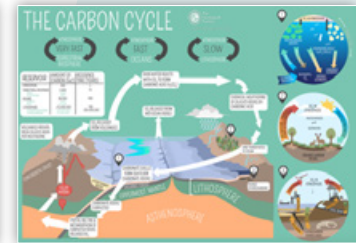
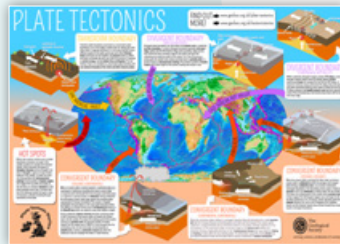
PACK 2: GEOGRAPHY CONTENT

\$81
INCLUDES P/H

4 x A1 posters

- Plate tectonics
- Minerals in a smartphone
- The Carbon Cycle
- On the Brink: The biggest threats to Earth's biodiversity

CLICK HERE TO ORDER PACK 2



PACK 3: A1 CAREERS POSTER

3 FOR
\$50
INCLUDES P/H

Where will GEOGRAPHY take you?

CLICK HERE TO ORDER PACK 3



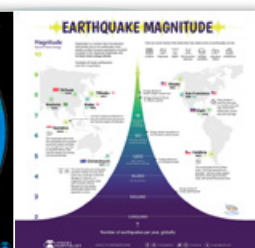
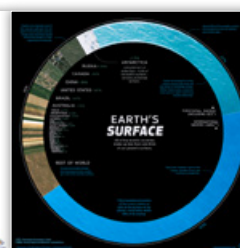
PACK 4: Three square posters

\$55
INCLUDES P/H

3 x 60cm Square Posters

- UN sustainable development goals
- Earth's surface
- Earthquakes

CLICK HERE TO ORDER PACK 4



GEOGRAPHY POSTERS FOR SALE

INDIVIDUAL SELECTION: A1 & 60cm square posters

\$15
EACH

One type per order

1 to 5 posters \$15 postage (1 cylinder)


6 to 10 posters \$30 postage (2 cylinders) etc

A1 POSTER SELECTION:

- Plate tectonics
- Minerals in a smartphone
- The Carbon Cycle
- On the Brink: The biggest threats to Earth's biodiversity
- Where will GEOGRAPHY take you?
- Biomes and Ecosystem

SQUARE POSTER SELECTION:

- UN sustainable development goals
- Earth's surface
- Earthquakes

CLICK HERE TO ORDER INDIVIDUAL POSTERS 

PACK 5: Geography careers

\$35
INCLUDES P/H

Set of 6 x A3 Careers Using Geography flyers

* Note: Pack 5 will be mailed as a flat pack

CLICK HERE TO ORDER PACK 5 



GEOGRAPHY POSTERS FOR SALE

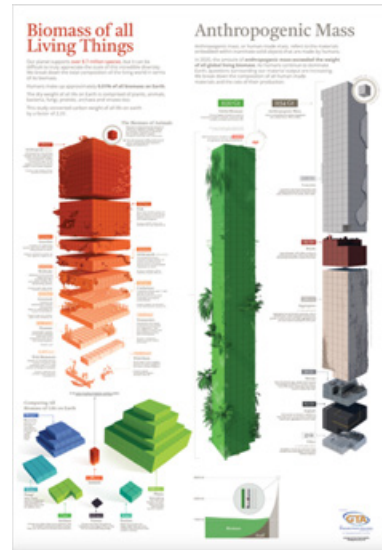
A1 BIOMASS POSTER

\$30
INCLUDES P/H

Redesigned from licensed materials for
GTANSW & ACT (2024)
Targeted at Stage 6 Human Environment Interactions and
Ecosystems and Global Biodiversity.
(Cost recovery – licensing + design + printing)

*** Add On the Brink to make a neat package on
biodiversity for just \$10 extra.

CLICK HERE TO ORDER
BIOMASS POSTER



A1 POSTER SET: BIOMASS
PLUS ON THE BRINK

\$40
INCLUDES P/H

CLICK HERE TO ORDER
A1 POSTER SET



FLOODS POSTER (100 cm x 40 cm)

\$25
INCLUDES P/H

Commissioned artwork for **GTANSW & ACT (2024)**
Suited to stage 4 and Stage 6 Natural hazards.
Designed for classroom walls or student groupwork.
(Cost recovery – design and printing)

CLICK HERE TO ORDER
FLOODS POSTER



Causes of the North Coast floods 2022

The reasons for these floods are complex. They included large-scale climate drivers, a collision of weather events, and (potentially) long-range climate changes resulting from global warming. These global factors, combined with the natural topography of the local region, which was formed aeons ago, plus more recent changes in land use and vegetation cover, combined to create an unprecedented natural disaster.

CLIMATE DRIVERS
In the spring and summer of '21 and '22, a rare marine climate system combined with the Southern Annular Mode to create extreme levels of rainfall along the east coast. Meanwhile, the Indian Ocean Dipole was hanging around the western side of the country and was providing another factor in creating conditions for the high rainfall experienced here in the Northern Rivers, which became collectively these patterns as contributing to warmer ocean temperatures, which meant more moisture in the air, which created more rain.

EXTREME WEATHER
Locally, a fresh combination of weather patterns produced exceptionally heavy rainfall from 23 February to 6 March. This was due to an atmospheric 'near-bringing' large amount of moisture-laden air from the tropical north-east, which then collided with a trough (or long band of low pressure) along the coast. This combination, along with a system area which is place for storms, because of a blocking high pressure system over the Tasman Sea, in the Northern Rivers, this stationary tongue combined with the region's distinctive mountains and high ground to generate huge and persistent downpours.

CLIMATE CHANGE
According to the Australian Research Council's Centre of Excellence for Climate Extremes, it's currently beyond scientific methods to be able to attribute the effects of climate change to any individual flood event. Generally though, as global heating continues, heavy rainfall events will likely increase in intensity, increasing the risk, unpredictability and frequency of flooding.

CHANGED LAND USE
British colonists arrived. Amongst the world's 'food and fibre' belt with the extent of Australian conditions. Back home, droughts lasted a few days, or maybe weeks, not years. And floods were a predictable part of a year's behaviour because they had constant flows and well-known characteristics and soil conditions. Alternatively, Australian river banks were highly variable and extremely variable, striking one moment and raging the next, with little warning.

LAY OF THE LAND
While first/second generation had developed an understanding of the Northern Rivers' settlement over millennia, the First European colonists only saw its resources. With logging of Australian red cedar followed by further clearing for pastoral activities, mostly changed the landscape from dense forest to bare fields. Natural waterways were also drained and turned into farmland, creating the landscape we see today, with reduced capacity for the soil to absorb and store rainfall. Run-off increased, meaning larger volumes of water poured into the creeks and rivers in shorter amounts of time, exacerbating the effects of being and prolonged rainfall.

NOTE: Order multiple copies for groupwork or combine with other individual posters to save on P & H. Max 5 posters per cylinder. Each cylinder is additional P & H

For more details and to order go to: www.gtansw.org.au/order-resources



Advice To Contributors

Geography Bulletin guidelines

1. **Objective:** The *Geography Bulletin* is the quarterly journal of The Geography Teachers' Association of NSW & ACT Inc. The role of the *Geography Bulletin* is to disseminate up-to-date geographical information and to widen access to new geographic teaching ideas, methods and content. Articles of interest to teachers and students of geography in both secondary and tertiary institutions are invited, and contributions of factually correct, informed analyses, and case studies suitable for use in secondary schools are particularly welcomed.

2. **Content:** Articles, not normally exceeding 5000 words, should be submitted to the GTA NSW & ACT Office by email gta.admin@ptc.nsw.edu.au

Submissions can also be sent directly to the editor: Katerina Stojanovski (gta.admin@ptc.nsw.edu.au)

Articles are welcomed from tertiary and secondary teachers, students, business and government representatives. Articles may also be solicited from time to time. Articles submitted will be evaluated according to their ability to meet the objectives outlined above.

3. **Format:** Digital submission in Word format.

- Tables should be on separate pages, one per page, and figures should be clearly drawn, one per page, in black on opaque coloured background, suitable for reproduction.
- Photographs should be in high resolution digital format. An indication should be given in the text of approximate location of tables, figures and photographs.
- Every illustration needs a caption.
- Photographs, tables and illustrations sourced from the internet must acknowledge the source and have a URL link to the original context.

Note: Please try to limit the number of images per page to facilitate ease of reproduction by teachers.

Diagrams created using templates should be saved as an image for ease of incorporation into the Bulletin

All assessment or skills tasks should have an introduction explaining links to syllabus content and outcomes. A Marking Guideline for this type of article is encouraged.

4. **Title:** The title should be short, yet clear and descriptive. The author's name should appear in full, together with a full title of position held and location of employment.

5. **Covering Letter** As email with submitted articles. If the manuscript has been submitted to another journal, this should be stated clearly.

6. **Photo of Contributor** Contributors may enclose a passport-type photograph and a brief biographical statement as part of their article.

7. **References:** References should follow the conventional author-date format:

Abbott, B. K. (1980) *The historical and geographical development of Muswellbrook* Newcastle: Hunter Valley Press.

Harrison, T. L. (1973a) *Railway to Jugiong* Adelaide: The Rosebud Press (2nd Ed.)

8. **Spelling** should follow the Macquarie Dictionary, and Australian place names should follow the Geographical Place Names Board for the appropriate state.

Refereeing

All suitable manuscripts submitted to the *Geography Bulletin* are subject to the process of review. The authors and contributors alone are responsible for the opinions expressed in their articles and while reasonable checks are made to ensure the accuracy of all statements, neither the editor nor the Geography Teachers' Association of NSW & ACT Inc accepts responsibility for statements or opinions expressed herein.

Books for review should be sent to:

The GTA NSW & ACT Council
PO Box 699
Lidcombe NSW 1825.

Editions

There are four bulletins each year – two published each semester. Special Editions are created on need.

Notice to Advertisers

'Geography Bulletin' welcomes advertisements concerning publications, resources, workshops, etc. relevant to geography education.

FULL PAGE (26 x 18cm) – \$368.50
Special issues \$649.00

HALF PAGE (18 x 13cm or 26 x 8.5cm) – \$214.50
Special Issues \$382.80

QUARTER PAGE (13 x 8.5cm or 18 x 6.5cm) – \$132.00
Special issues \$242.00

All prices include GST

Advertising bookings should be directed to:

GTA NSW & ACT Office
Telephone: (02) 9716 0378
Fax: (02) 9564 2342
Email: gta.admin@ptc.nsw.edu.au



The
Geography Teachers Association
of NSW & ACT Inc.